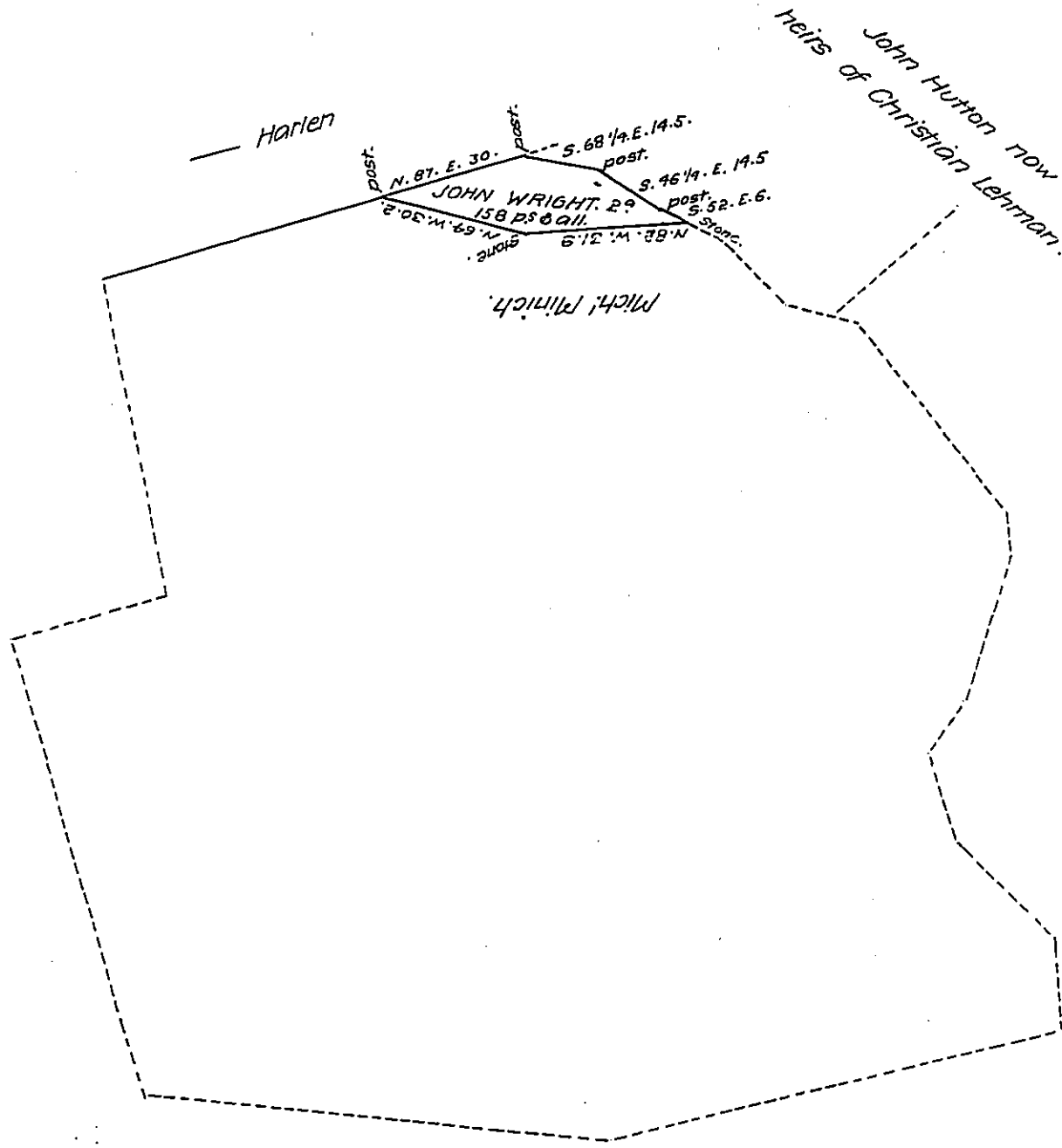


FORM No. 1.



Situate in Manallen Township Adams County Being part of a tract said to contain 167⁹ & allie. now found to contain 169⁹ 87 ps. & alle. Surv^d April 13th 1787 by Moses M^cClean D.S. by warrant to John Wright dated Oct^r 26th 1786 divided off from the October 25th 1815 for the heirs of Christian Lehman containing two acres one hundred & fifty eight perches & allie.

By Sam^l Sloan D.S.

To Jacob Spangler Esq.
Surveyor General.

IN TESTIMONY that the above is a copy of the original remaining on file in the Department of Internal Affairs of Pennsylvania, made conformably to an Act of Assembly approved the 16th day of February 1833, I have hereunto set my hand and caused the Seal of said Department to be affixed at Harrisburg, this twentieth day of September 1907.

Henry Houck
Secretary of Internal Affairs.